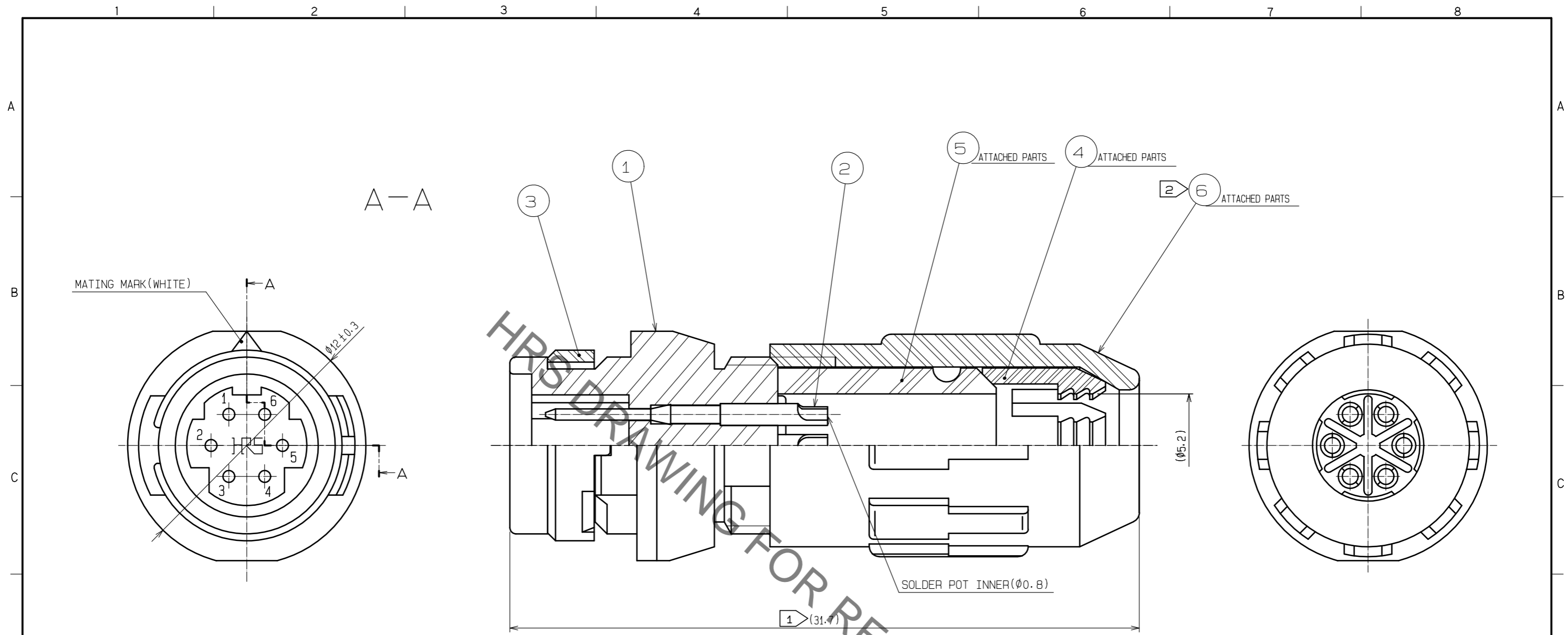


Dec.1.2021 Copyright 2021 HIROSE ELECTRIC CO., LTD. All Rights Reserved.
In case of consideration for using Automotive equipment / device which demand high reliability, kindly contact our sales window correspondents.



- NOTES
- ① TOTAL LENGTH BECOMES 28.8±1 WHEN ⑥ IS SCREWED INTO ① COMPLETELY.
 - ② THE RECOMMENDED CLUMP TORQUE OF REF. NO.⑥ TO BE 0.5N·m.
LOCTITE 263, LOCPRIMER 7649, HENKEL JAPAN IS RECOMMENDED TO PREVENT REF. NO.⑥ FROM LOOSENING.
SPACER FOR ASSEMBLY IS AVAILABLE HR30-6P-T02.
 - ③ TABLE FOR ASSEMBLY AND SOLDERING IS AVAILABLE HR30-6R-6P-T01.
 - ④ SURFACE PLATING:GOLD PLATING 0.2µm min.
UNDER PLATING:NICKEL PLATING 2µm min.
 - ⑤ THE CABLE PULL AND TWISTING STRENGTH AND OTHER CHARACTERISTICS MAY DIFFER,
DEPENDING ON THE CABLE STRUCTURE.
PLEASE CONFIRM BEFORE THE USE.

3	PPS	(BLACK) UL94V-0	6	PBT	(BLACK) UL94V-0
2	BRASS	④	5	CR	(BLACK)
1	PPS	(BLACK) UL94V-0	4	POLYACETAL	(NATURAL)
NO.	MATERIAL	FINISH . REMARKS	NO.	MATERIAL	FINISH . REMARKS

UNITS mm		SCALE 5 : 1	COUNT 1	DESCRIPTION OF REVISIONS DIS-C-00002603	DESIGNED HY. KISHI	CHECKED HY. KOBAYASHI	DATE 18.09.05
HRS HIROSE ELECTRIC CO., LTD.		APPROVED : HY. KOBAYASHI	18.02.26	DRAWING NO.	EDC-112103-31-00		
		CHECKED : HY. KOBAYASHI	18.02.26	PART NO.	HR30-6J-6P(31)		
		DESIGNED : DS. MATSUNE	18.02.26	CODE NO.	CL130-2009-6-31		
		DRAWN : DS. MATSUNE	18.02.26		①/1		