

PRODUCT MANUAL
IWS-3220M

MINIATURE OPEN BARREL CRIMPING TOOL
FOR NARROW-PITCH CONNECTOR PINS

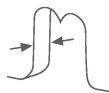
GENERAL INFORMATION

- Crimping Capacity: AWG32-20(0.03-0.52mm²).
- Ideal for narrow-pitch connector pins, form excellent crimps.
- Ultra-precise Wire EDM processed jaws permit close tolerance.
- Typical parallel crimping type ensures stability and power equality.
- Double-layer crimping jaws crimp conductor&insulation sheath simultaneously.

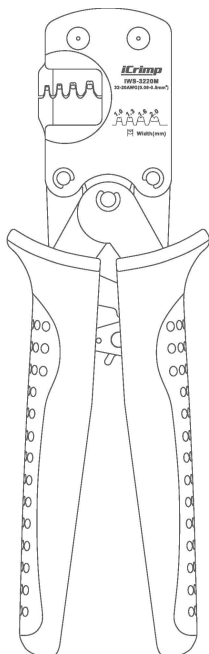
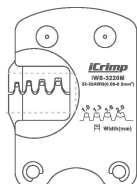
PARAMETERS



Width



Thickness



Die			Applicable wire size		
Width (mm)	Height (mm)	Thickness	AWG Conductors	Ømm	mm ²
1.0	0.50	2.6	#32-#28	0.20-0.32	0.03-0.08
1.3	0.70		#28-#24	0.32-0.51	0.08-0.21
1.6	0.80		#24-#22	0.51-0.64	0.21-0.33
2.0	1.20	4.0	#24-#20	0.51-0.81	0.21-0.52

TYPICAL APPLICABLE TERMINALS

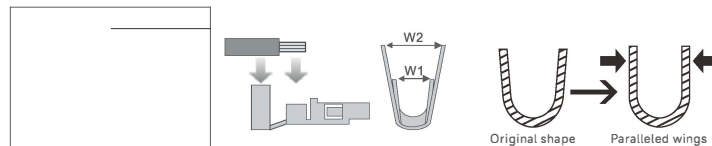
JST		MOLEX	
SSUH-003T-P0.15	SSH-003T-P0.2-H	502381-0000	50058-8100
SSH-003GA-P0.2	SSLH-003T-P0.2	50079-8100	502579-0000

TYCO E		JAE	
1827586-2	1827587-2	IL-G-C2-SC-0001	IL-S-C2-SC-0001
1827571-2	1827589-2	IL-Z-C13-A-0001	M34575C4F1

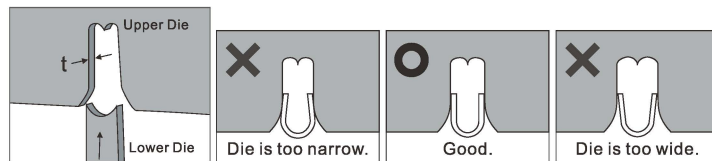
OPERATION GUIDANCE

1. Select dies for conductor

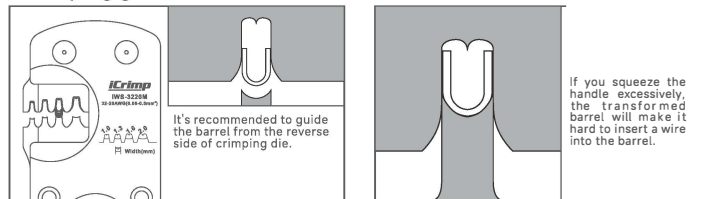
- Measure the width of conductor barrel with a caliper while both barrel wings are squeezed in parallel.



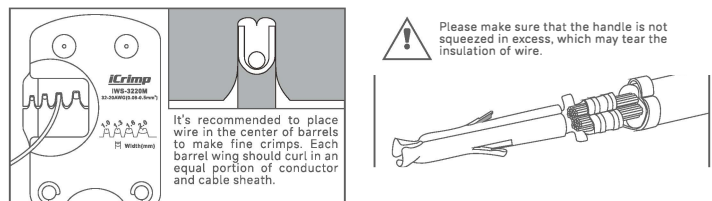
- Select the die width which is close to the width of barrel measured. Example: paralleled terminal width is 1.5mm, then select 1.6mm die.



2. Crimping guidance



1. Place a paralleled barrel into the upper die.
2. Squeeze the handles to hold the barrel in the die temporarily.



3. Insert the stripped wire into barrels.
4. Crimping result.