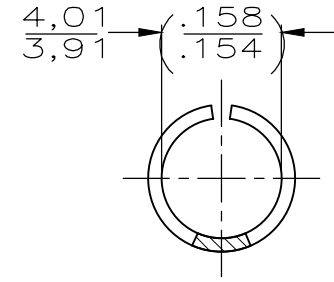
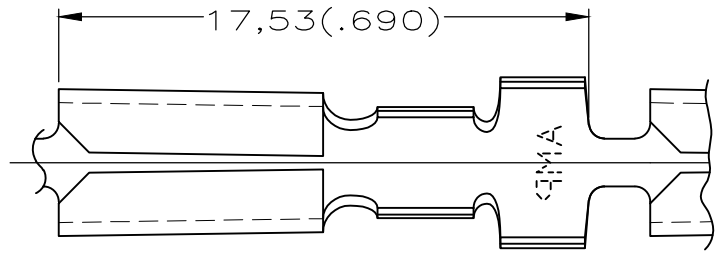
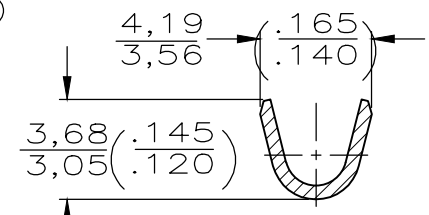
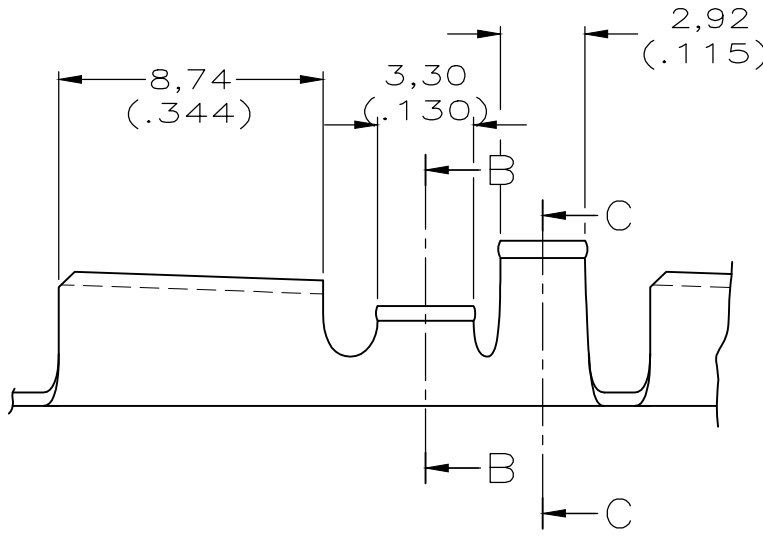


LOC	DIST	REVISIONS			DATE	DWN	APVD
—	—	P	LTR	DESCRIPTION			
		D1		REVISED PER ECO-14-010400	25MAR2015	NG	PS

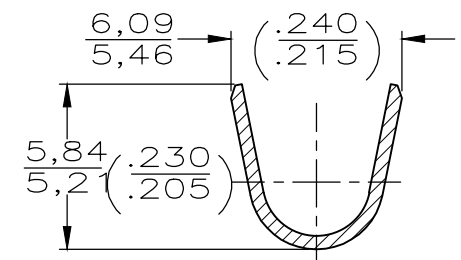
WIRE RANGE :
0,8–2,0mm² (18–14 AWG)
INSULATION RANGE :
3,30–4,45 (DIA.)
.130–.175



VIEW A-A



SECTION B-B



SECTION C-C

NOTES:

- 1 CONTINUOUS STRIP, ON REELS.
- 2 DIM'S IN BRACKETS ARE IN INCHES.
- 3 SPLICE-FREE.

OBSOLETE	TIN PLATED	0,46 (.018) THK. BRASS	-62734-4
OBSOLETE	SILVERPLATED	0,46 (.018) THK. BRASS	3-62734-3
	SILVERPLATED	0,46 (.018) THK. BRASS	62734-2
	NONE	0,46 (.018) THK. BRASS	62734-1
	FINISH	MATERIAL	PARTNUMBER

THIS DRAWING IS UNPUBLISHED. ALL RIGHTS RESERVED. By - - - - - COPYRIGHT - - - - -

DIMENSIONS: mm	DWN	R.DAAMEN	02-09-92	MATERIAL	-	FINISH	-
	CHK	R.DIJKSTRA	-				
TOLERANCES UNLESS OTHERWISE SPECIFIED:	APVD	L.v.SOEST	-				
0 PLC ± -	PRODUCT SPEC	-	NAME	.156 DIA. PIN RECEPTACLE			
1 PLC ± -	APPLICATION SPEC	-	SIZE	CAGE CODE	DRAWING NO	RESTRICTED TO	
2 PLC ± -	WEIGHT	-	A4	00779	C-C-62734	-	
3 PLC ± -							
4 PLC ± -							
ANGLES ± -							
			CUSTOMER DRAWING		SCALE	1:1	SHEET 1 OF 1
							REV D1