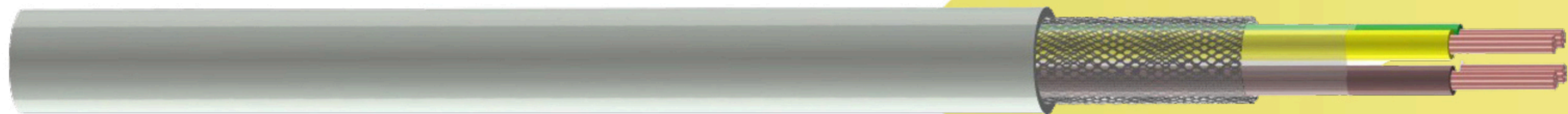


LIYCY

Suitable for connection of movable equipment or for fixed laying in areas with risk of fire.

To be used in dry or wet interiors and for occasional or temporary use outdoor. Not allowed for laying underground even if protected.



CONSTRUCTION

Formation:

Plain annealed copper wire, Multistrand

Insulation:

Polyvinyl chloride - PVC

Wrapping:

at least 1 layer of plastic tape 0,023 mm

Collective Screen:

Aluminium / PETP + Tinned Copper Braid

Outer Sheath:

Polyvinyl chloride Flame Retardant - PVC FR

Colour Outer Sheath:

Grey RAL 7032

CABLE PRINTING

RAMCRO - LIYCY 2x0,14 mm² - 300/500V - VDE 0812 - IEC 60332-3 - EN 50575: 2014+A1:2016 CPR Class B2ca + BATCH + METER MARKING

ELECTRICAL DATA

Insulation Resistance @ 20°C: > 25 MOhm*Km

Test Voltage Core-Core: 2000 V

Test Voltage Core-Screen: 2000 V

Mutual Capacitance: < 150 nF/km

Inductance: < 1 mH/km

Operating Voltage:

From 0,14 mm² to 0,75 mm²: 300/500 V

From 1,00 mm² to 4,00 mm²: 450/750 V

PACKAGE



STANDARD REFERENCES

- EN 50414
- CEI EN 60332-1-2
- CEI 20-22 II
- CEI EN 50267-2

CPR CLASSIFICATION

EN 50575:2016 - B2_{CA} s1, d0, a3

IDENTIFICATION OF CORES

In according to HD 308

TEMPERATURE RANGE

During Operation:

-30° C up to +80°C

During Installation:

-5° C up to +50°C



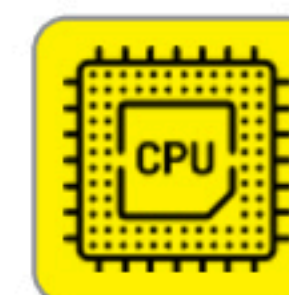
CHARACTERISTICS

Min. Bending Radius

8 x cable diameter



Control Cable



Italian Market



ON REQUEST

- Armour in steel wire braid
- Personalized colour code and outer sheath