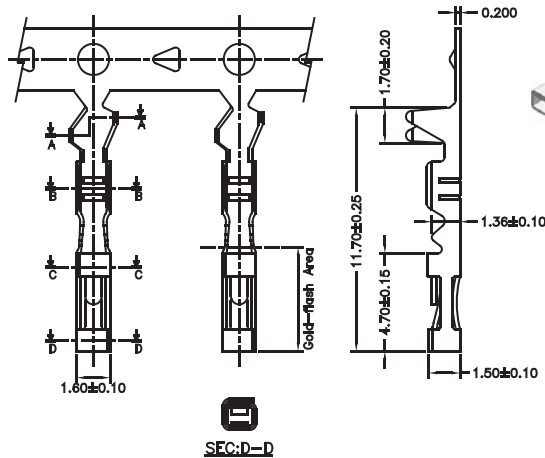


## 2.54mm Terminal / Housing

### Specifications

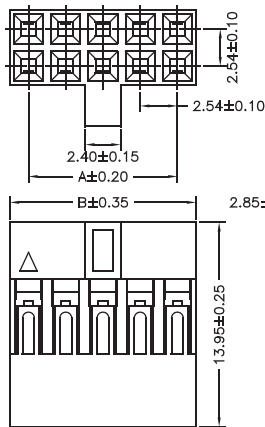
Current Rating: 3A AC,DC  
 Voltage Rating: 250V AC,DC  
 Temperature Range: -25°C to +85°C  
 Contact Resistance: 20mΩ Max  
 Insulation Resistance: 1000MΩ Min  
 Withstanding Voltage: 1500V AC/minute  
 Material: Nylon 66, UL94V-0



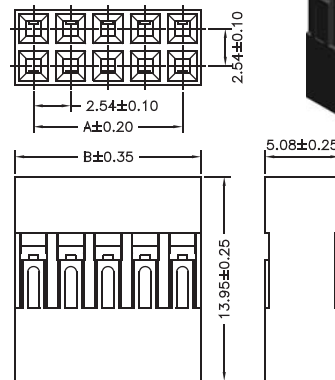
Part No.	Wire Range	Insulation O.D.	Material	Finish
2541-TGB-L	#22-#26	1.63mm(Max)	Brass	Gold Plated
2541-TGP-L			Phosphor Bronze	

Part No.:2541-T-L

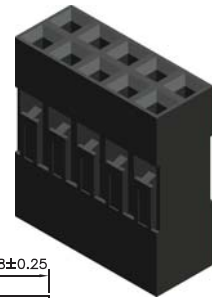
No. of Contacts	Dimensions		No. of Contacts	Dimensions	
	A	B		A	B
2x1	-	2.54	2x21	50.80	53.34
2x2	2.54	5.08	2x22	53.34	55.88
2x3	5.08	7.62	2x23	55.88	58.42
2x4	7.62	10.16	2x24	58.42	60.96
2x5	10.16	12.70	2x25	60.96	63.50
2x6	12.70	15.24	2x26	63.50	66.04
2x7	15.24	17.78	2x27	66.04	68.58
2x8	17.78	20.32	2x28	68.58	71.12
2x9	20.32	22.86	2x29	71.12	73.66
2x10	22.86	25.40	2x30	73.66	76.20
2x11	25.40	27.94	2x31	76.20	78.74
2x12	27.94	30.48	2x32	78.74	81.28
2x13	30.48	33.02	2x33	81.28	83.82
2x14	33.02	35.56	2x34	83.82	86.36
2x15	35.56	38.10	2x35	86.36	88.90
2x16	38.10	40.64	2x36	88.90	91.44
2x17	40.64	43.18	2x37	91.44	93.98
2x18	43.18	45.72	2x38	93.98	96.52
2x19	45.72	48.26	2x39	96.52	99.06
2x20	48.26	50.80	2x40	99.06	101.60



With Bump



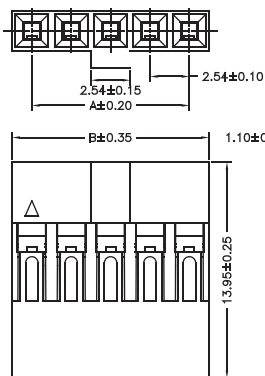
W/O Bump



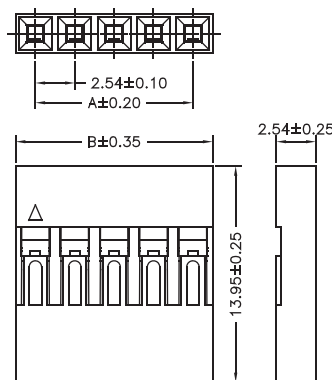
Part No.:2541H-2XXB-L

- 1:With Bump
- 2:W/O Bump

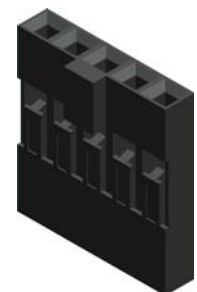
No. of Contacts	Dimensions		No. of Contacts	Dimensions	
	A	B		A	B
2x1	-	2.54	2x21	50.80	53.34
2x2	2.54	5.08	2x22	53.34	55.88
2x3	5.08	7.62	2x23	55.88	58.42
2x4	7.62	10.16	2x24	58.42	60.96
2x5	10.16	12.70	2x25	60.96	63.50
2x6	12.70	15.24	2x26	63.50	66.04
2x7	15.24	17.78	2x27	66.04	68.58
2x8	17.78	20.32	2x28	68.58	71.12
2x9	20.32	22.86	2x29	71.12	73.66
2x10	22.86	25.40	2x30	73.66	76.20
2x11	25.40	27.94	2x31	76.20	78.74
2x12	27.94	30.48	2x32	78.74	81.28
2x13	30.48	33.02	2x33	81.28	83.82
2x14	33.02	35.56	2x34	83.82	86.36
2x15	35.56	38.10	2x35	86.36	88.90
2x16	38.10	40.64	2x36	88.90	91.44
2x17	40.64	43.18	2x37	91.44	93.98
2x18	43.18	45.72	2x38	93.98	96.52
2x19	45.72	48.26	2x39	96.52	99.06
2x20	48.26	50.80	2x40	99.06	101.60



With Bump



W/O Bump



Part No.:2541H-1XXB-L

- 1:With Bump
- 2:W/O Bump