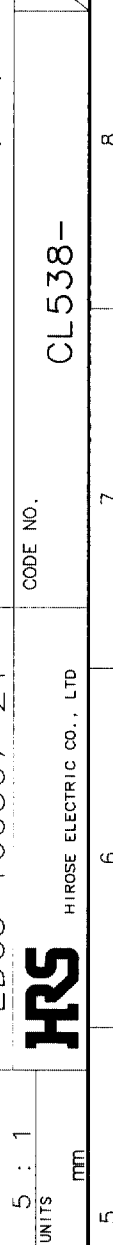
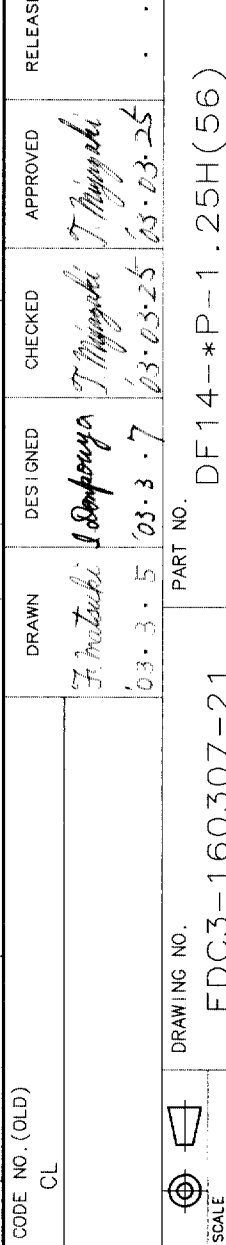
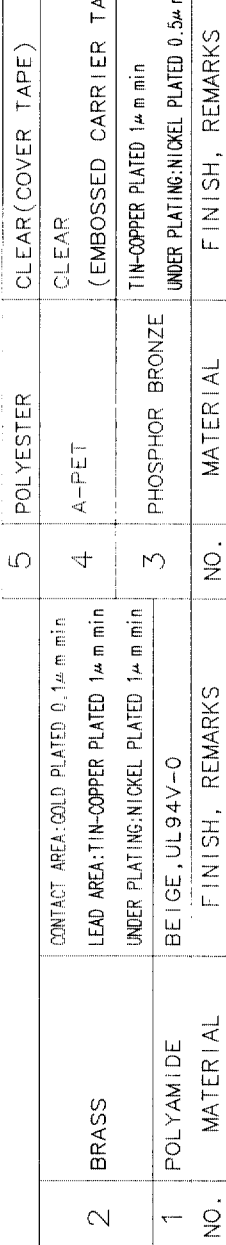
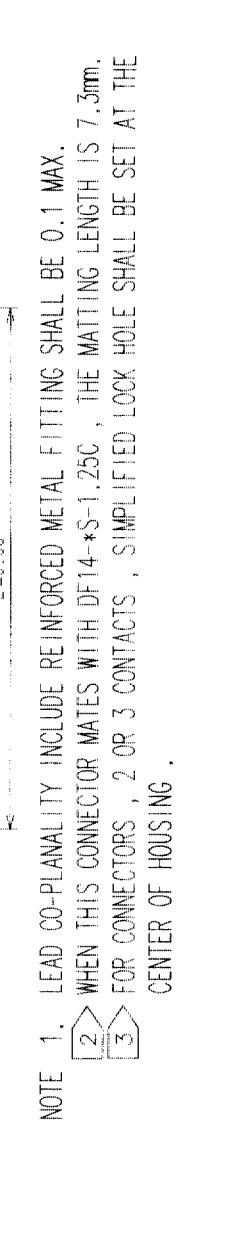
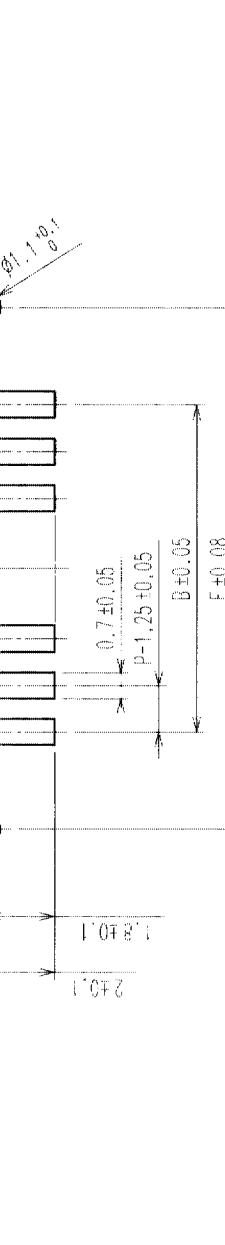
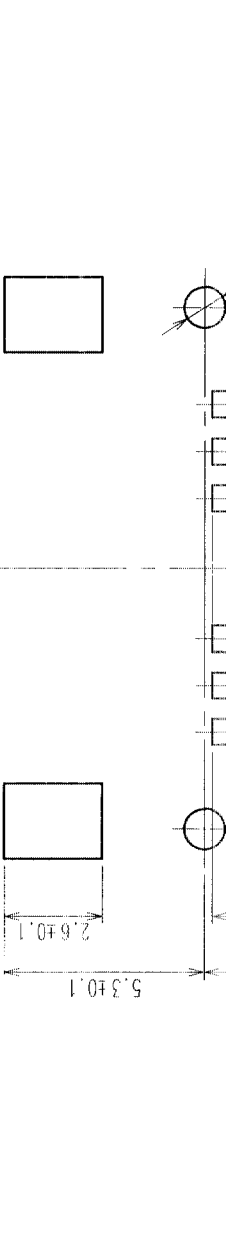
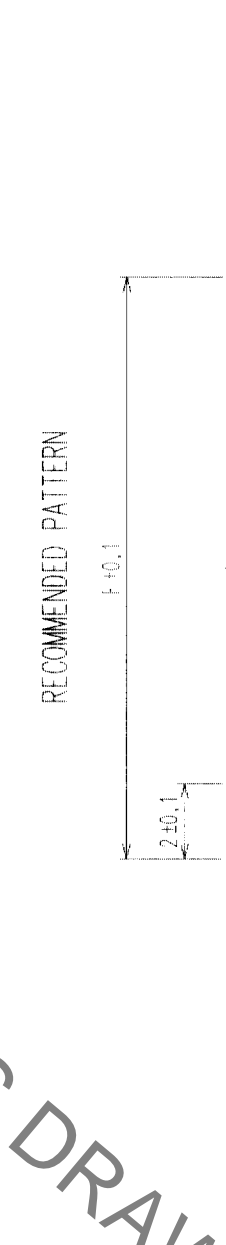
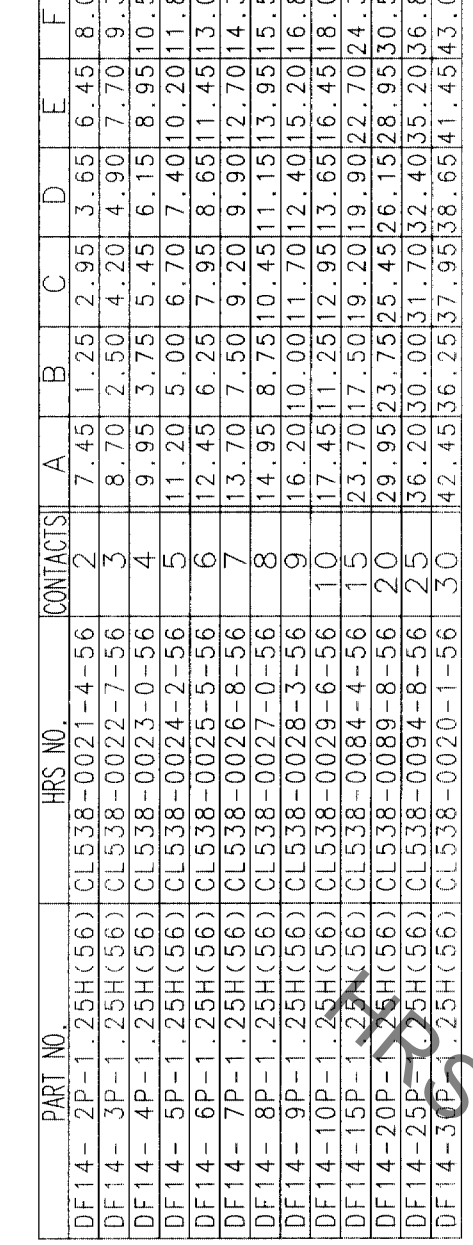


COUNT	DESCRIPTION OF REVISIONS	BY	CHKD	DATE	COUNT	DESCRIPTION OF REVISIONS	BY	CHKD	DATE

PART NO.	HRS. NO.	CONTACTS	A	B	C	D	E	F
DF14-2P-1.25H(56)	CL538-0021-4-56	2	7.45	1.25	2.95	3.65	6.45	8.05
DF14-3P-1.25H(56)	CL538-0022-7-56	3	8.70	2.50	4.20	4.90	7.70	9.30
DF14-4P-1.25H(56)	CL538-0023-0-56	4	9.95	3.75	5.45	6.15	8.95	10.55
DF14-5P-1.25H(56)	CL538-0024-2-56	5	11.20	5.00	6.70	7.40	10.20	11.80
DF14-6P-1.25H(56)	CL538-0025-5-56	6	12.45	6.25	7.95	8.65	11.45	13.05
DF14-7P-1.25H(56)	CL538-0026-8-56	7	13.70	7.50	9.20	9.90	12.70	14.30
DF14-8P-1.25H(56)	CL538-0027-0-56	8	14.95	8.75	10.45	11.15	13.95	15.55
DF14-9P-1.25H(56)	CL538-0028-3-56	9	16.20	10.00	11.70	12.40	15.20	16.80
DF14-10P-1.25H(56)	CL538-0029-6-56	10	17.45	11.25	12.95	13.65	16.45	18.05
DF14-15P-1.25H(56)	CL538-0084-4-56	15	23.70	17.50	19.20	19.90	22.70	24.30
DF14-20P-1.25H(56)	CL538-0089-8-56	20	29.95	23.75	25.45	26.15	28.95	30.55
DF14-25P-1.25H(56)	CL538-0094-8-56	25	36.20	30.00	31.70	32.40	35.20	36.80
DF14-30P-1.25H(56)	CL538-0020-1-56	30	42.45	36.25	37.95	38.65	41.45	43.05



NOTE 1. LEAD CO-PLANALITY INCLUDE REINFORCED METAL FITTING SHALL BE 0.1 MAX.
 2. WHEN THIS CONNECTOR MATES WITH DF14-S-1.25C, THE MATTING LENGTH IS 7.3mm.
 3. FOR CONNECTORS, 2 OR 3 CONTACTS, SIMPLIFIED LOCK HOLE SHALL BE SET AT THE CENTER OF HOUSING.

NO.	MATERIAL	FINISH, REMARKS	NO.	MATERIAL	FINISH, REMARKS
2	BRASS	CONTACT AREA: GOLD PLATED 0.1μm min LEAD AREA: TIN-COPPER PLATED 1μm min	5	POLYESTER	CLEAR(COVER TAPE)
1	POLYAMIDE	UNDER PLATING: NICKEL PLATED 1μm min BEIGE, UL94V-0	4	A-PET	CLEAR (EMBOSSED CARRIER TAPE)
NO.	MATERIAL	FINISH, REMARKS	3	PHOSPHOR BRONZE	TIN-COPPER PLATED 1μm min UNDER PLATING: NICKEL PLATED 0.5μm min

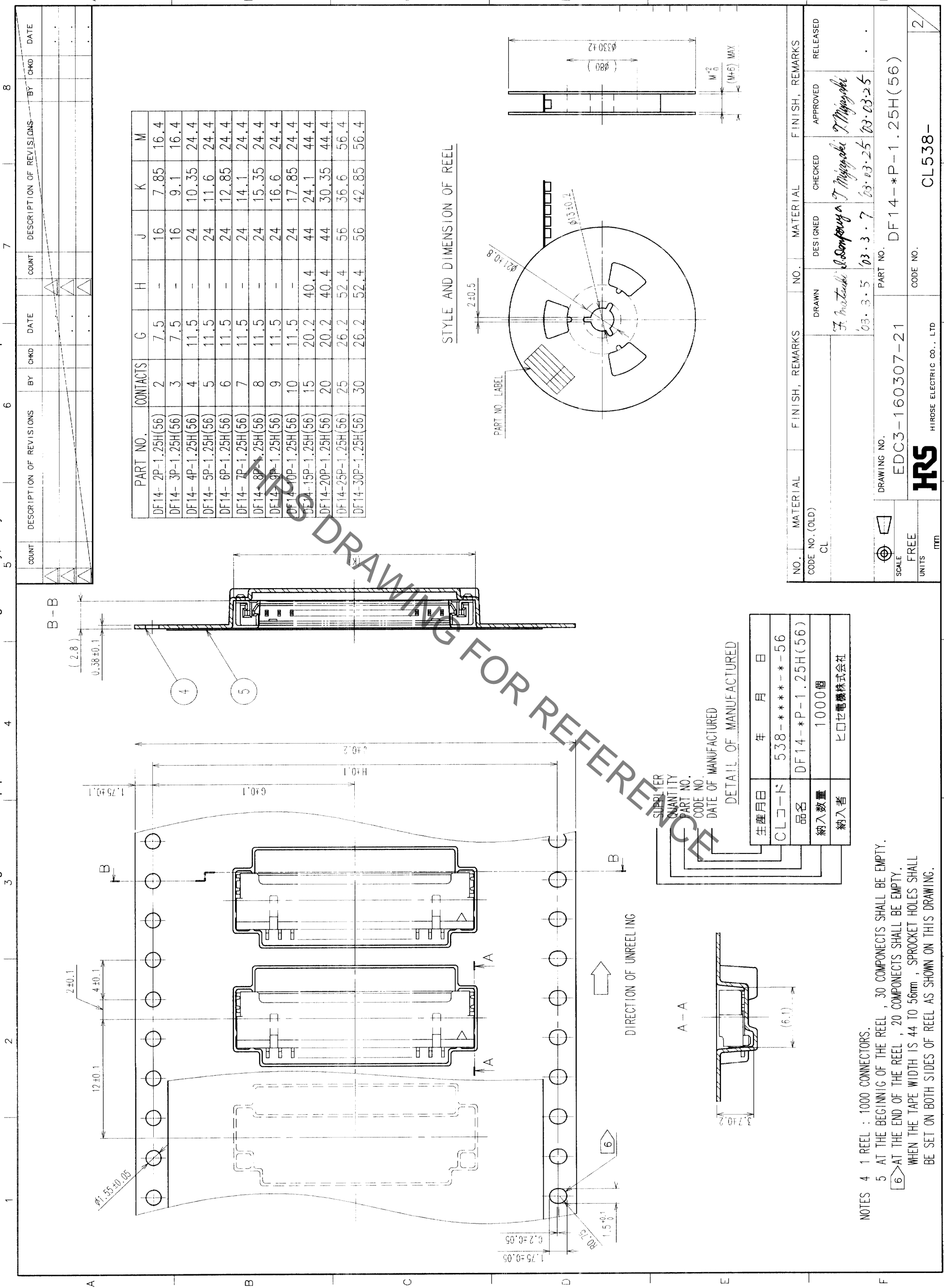
CODE NO. (OLD)	DRAWN	DESIGNED	CHECKED	APPROVED	RELEASED
CL	F. Matsuki 03.3.5	I. Sanyaya 03.3.7	T. Miyazaki 03.03.25	T. Miyazaki 03.03.25	

DRAWING NO.	PART NO.
EDC3-160307-21	DF14-*P-1.25H(56)

SCALE	UNITS	CODE NO.
5 : 1	mm	CL538-

NO
1/2

May.1.2020 Copyright 2020 HIROSE ELECTRIC CO., LTD. All Rights Reserved.
 In case of consideration for using Automotive equipment / device which demand high reliability, kindly contact our sales window correspondents.



STYLE AND DIMENSION OF REEL

PART NO.	CONTACTS	G	H	J	K	M
DF14-2P-1.25H(56)	2	7.5	-	16	7.85	16.4
DF14-3P-1.25H(56)	3	7.5	-	16	9.1	16.4
DF14-4P-1.25H(56)	4	11.5	-	24	10.35	24.4
DF14-5P-1.25H(56)	5	11.5	-	24	11.6	24.4
DF14-6P-1.25H(56)	6	11.5	-	24	12.85	24.4
DF14-7P-1.25H(56)	7	11.5	-	24	14.1	24.4
DF14-8P-1.25H(56)	8	11.5	-	24	15.35	24.4
DF14-9P-1.25H(56)	9	11.5	-	24	16.6	24.4
DF14-10P-1.25H(56)	10	11.5	-	24	17.85	24.4
DF14-15P-1.25H(56)	15	20.2	40.4	44	24.1	44.4
DF14-20P-1.25H(56)	20	20.2	40.4	44	30.35	44.4
DF14-25P-1.25H(56)	25	26.2	52.4	56	36.6	56.4
DF14-30P-1.25H(56)	30	26.2	52.4	56	42.85	56.4

STYLE AND DIMENSION OF REEL

DETAIL OF MANUFACTURED

生産月日	年	月	日
CLコード	538	-	***-**-56
品名	DF14-*P-1.25H(56)		
納入数量	1000個		
納入者	ヒロセ電機株式会社		

NOTES
 4 1 REEL : 1000 CONNECTORS.
 5 AT THE BEGINNING OF THE REEL , 30 COMPONENTS SHALL BE EMPTY.
 6 AT THE END OF THE REEL , 20 COMPONENTS SHALL BE EMPTY.
 WHEN THE TAPE WIDTH IS 44 TO 56mm , SPROCKET HOLES SHALL BE SET ON BOTH SIDES OF REEL AS SHOWN ON THIS DRAWING.

NO.	MATERIAL	FINISH, REMARKS	NO.	MATERIAL	FINISH, REMARKS
CL					

DRAWING NO.	EDC3-160307-21	PART NO.	DF14-*P-1.25H(56)
SCALE	FREE	CODE NO.	
UNITS	mm		

NO.	MATERIAL	FINISH, REMARKS	NO.	MATERIAL	FINISH, REMARKS

DESIGNED	DESIGNED	CHECKED	APPROVED	RELEASED
F. Matsuda	R. Saito	T. Miyaguchi	T. Miyaguchi	
03.3.5	03.3.7	03.03.25	03.03.25	



HIROSE ELECTRIC CO., LTD.

CL538-

2