



**IWISS**  
[www.iwiss.com](http://www.iwiss.com)

— For Environmentally Sealed Connections  
**AUTOMOTIVE REPAIR & SERVICE TOOL KIT** —



## IWISS KIT-DC01 Automotive Repair Tool Kit



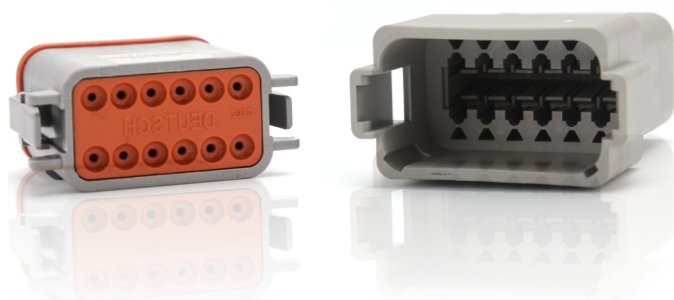
A complete 11 piece kit to crimp and release the most popular automotive specialized terminals found on cars, trucks, construction equipment, motorcycles, race cars, agricultural and marine equipment, heavy duty vehicles and other vehicles and equipment subject to excessive vibration and wherever an environmentally sealed connection is used

For use on:

- Deutsch open and closed barrel terminals
- Weather Pack terminals
- Metri Pack terminals
- Molex terminals
- Other open barrel terminals

## Deutsch Solid Contact Crimp Tools

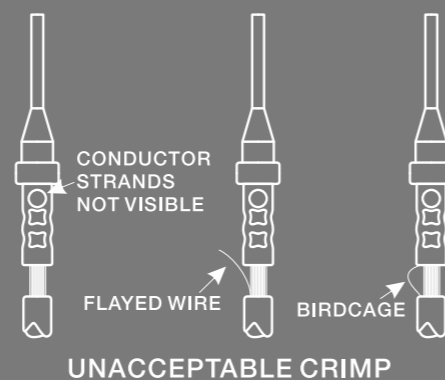
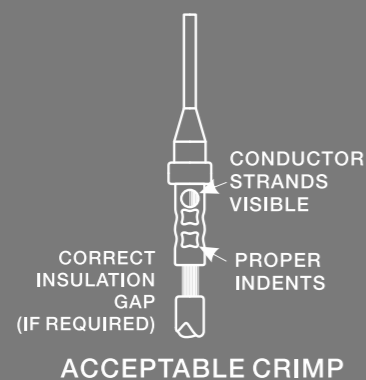
| Part No.    | IWD-12                 | IWD-16   | IWD-20   |
|-------------|------------------------|----------|----------|
| Application | Closed Barrel Terminal |          |          |
| Capacity    | 12AWG                  | 18-14AWG | 22-20AWG |
| Weight      | 0.64lb                 | 0.64lb   | 0.64lb   |
| Length      | 6.34inch               | 6.34inch | 6.34inch |
| Profile     | 4 indent, 8 impression |          |          |



Deutsch terminals are designed to be environmentally sealed and hold tight in extreme conditions above and beyond standard automotive electrical terminals so when it comes time to replace or repair those terminals or wires, special tools are needed to disassemble them.



**QUALIFIED  
CRIMP**



## Deutsch Stamped Contact & Weather Pack Terminal Crimp Tool



| Part No.    | IWC-1424A             | IWC-1424B              |
|-------------|-----------------------|------------------------|
| Application | Open Barrel Terminals | Weather Pack Terminals |
| Capacity    | 24-14AWG              | 24-14AWG               |
| Weight      | 0.64lb                | 0.64lb                 |
| Length      | 6.34inch              | 6.34inch               |

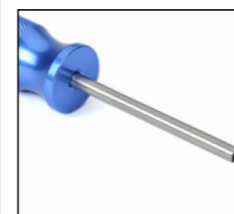
Weather Pack/Metri Pack is an environmentally sealed electrical connection system designed to withstand exposure to extreme temperatures, moisture, and harsh engine compartment fluids and chemicals. It is extensively used in tough applications including construction, off road, and farm equipment.



## Automotive Terminal Removal Tools

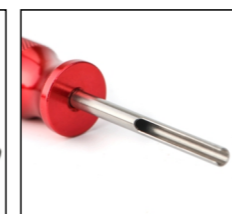
Deutsch terminals are designed to be environmentally sealed and hold tight in extreme conditions above and beyond standard automotive electrical terminals so when it comes time to replace or repair those terminals or wires, special tools are needed to disassemble them. The 6-Piece Deutsch Terminal & Weather Pack Terminal Removal Tool Kit was designed to do just that, to let you separate the wires from their terminals without causing damage to either.

### Release Tools Included:



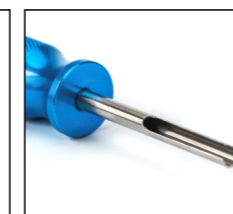
**WR01**

Weather Pack  
16-18Gauge



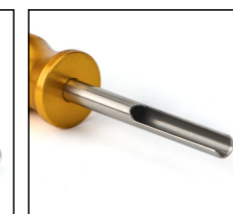
**DR01**

Deutsch Terminal  
20-24Gauge



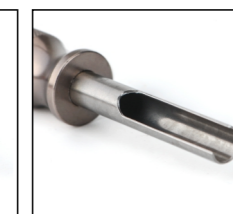
**DR02**

Deutsch Terminal  
16-18Gauge



**DR03**

Deutsch Terminal  
14-16Gauge



**DR04**

Deutsch Terminal  
8-10Gauge



**DR05**

Deutsch Terminal  
6Gauge