

FI SERIES CONNECTORS

1.25mm (.049") Contact Spacing, Connector for PCB-to-Cable

SINGLE ROW

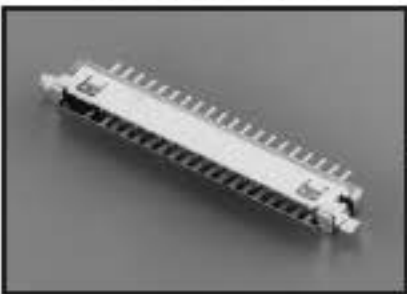
Board Side Receptacle

Right Angle
Standard Mount Shielded
FI-S***P-HFE



Note: Shielding only available in 20 position.

Right Angle
Reverse Mount Shielded
FI-SEB20P-HFE

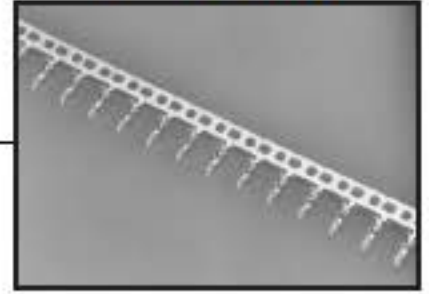


Type	Size
HF	1.48 (.058)
HF13	1.3 (.051)
HF10	1.0 (.039)

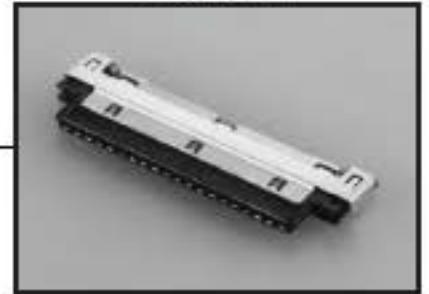
Cable Side Plug
Discrete Wire Unshielded
FI-S***S



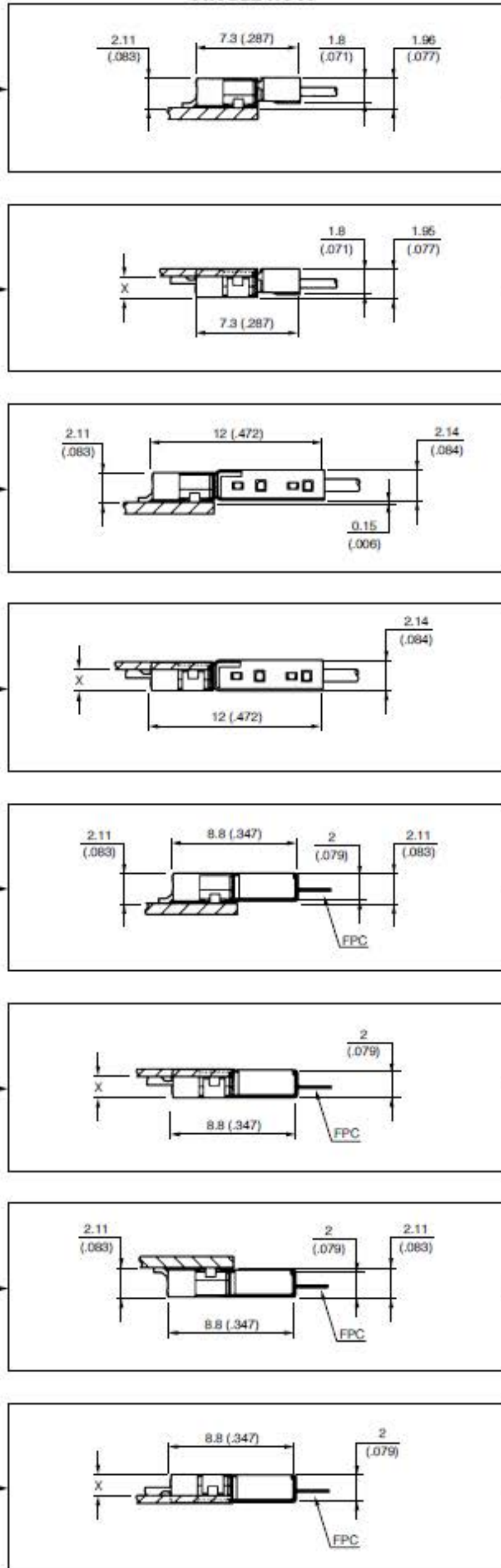
Socket Contact
FI-C3-A1-15000



Standard Shielded
FI-SE20ME



FPC-Reverse
FI-SE20RE



Dimensions in mm (inches).

FI SERIES CONNECTORS

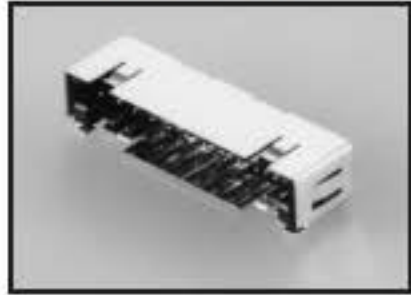
1.25mm (.049") Contact Spacing, Connector for PCB-to-Cable
DOUBLE ROW

Board Side Receptacle

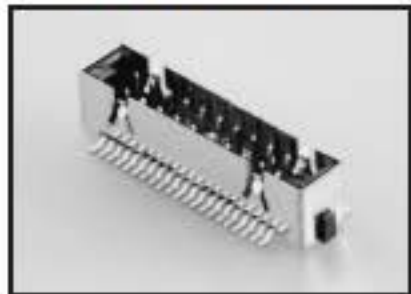
Right Angle, Unshielded
21, 31, 41 Sizes
FI-W*P-HFE



Right Angle, Shielded
21, 31, 41 Sizes
FI-WE*P-HFE

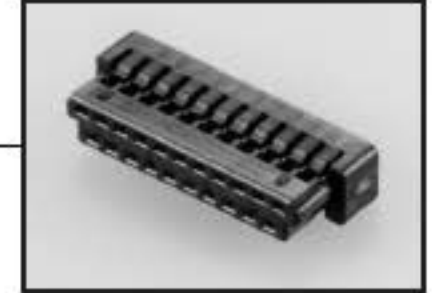


Straight, Shielded
21, 31 Sizes
FI-TWE*P*-VFE

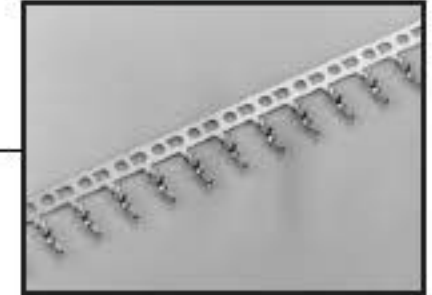


Cable Side Plug

Discrete Wire, Shielded
21, 31, 41 Sizes
FI-W*S



Socket Contact
FI-C3-A1-15000



FPC Right Angle, Shielded
21, 31 Sizes
FI-W*MA1



FPC Straight, Shielded
21, 31 Sizes
FI-WE*MVA1

