



Determination of Hazardous Substances

ROHS Checking Report

On Behalf of

V-TAC EXPORTS LIMITED

Trademark : 

LED PANEL LIGHT

Model Name.: VT-6060, VT-6060 D, VT-3030, VT-6061, VT-12030, VT-12030 M, VT-3030 M, VT-6061 M

Prepared For : V-TAC EXPORTS LIMITED

**ROOM NO. 301, KAM ON BUILDING 176A QUEENS ROAD
CENTRAL, CENTRAL, HONGKONG**

Manufacturer : V-TAC EXPORTS LIMITED

**ROOM NO. 301, KAM ON BUILDING 176A QUEENS ROAD
CENTRAL, CENTRAL, HONGKONG**

Prepared By : Global-Standard Testing Service Co., Ltd.

**Room 1911-1914, Noble Plaza, Qian Jin 1st Road, Bao An
District, Shenzhen, Guangdong, China**

Tel : +86 755 33863798

Fax : +86 755 33863718

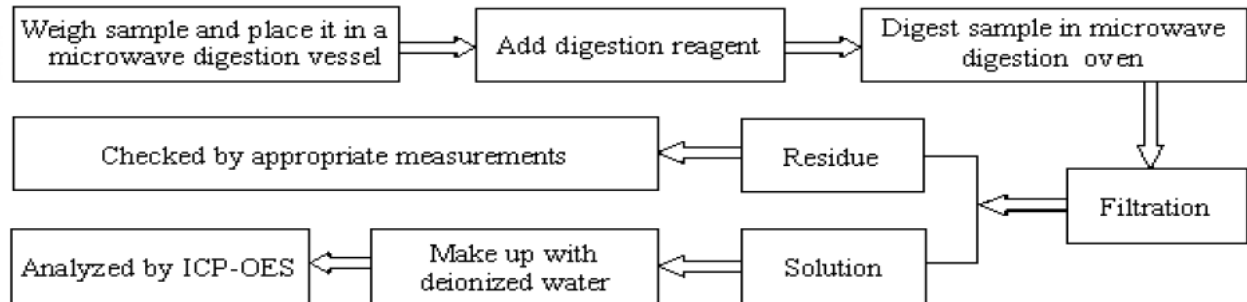
Report Number : GST121217591R

Date of Report : December 20, 2012

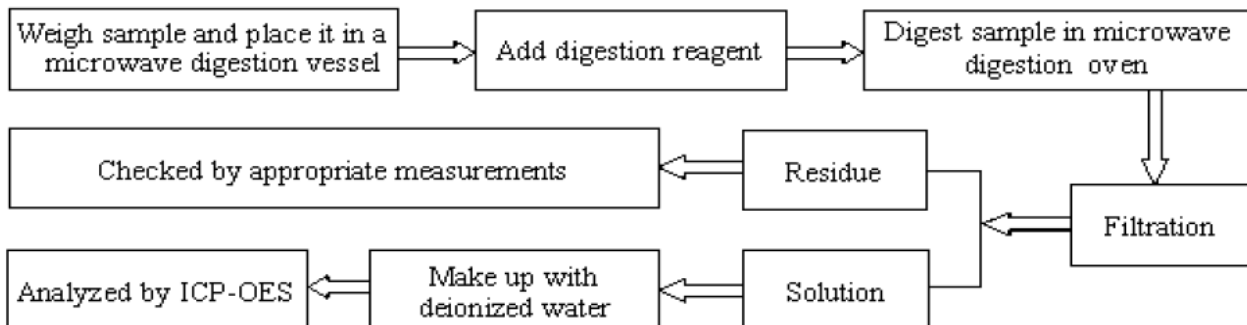
Test process

Note: This report shall not be reproduced except in full, without the written approval of Global-Standard Testing Service Co., Ltd. This document may be altered or revised by Global-Standard Testing Service Co., Ltd. personnel only, and shall be noted in the revision section of the document. The test results in the report only apply to the tested sample.

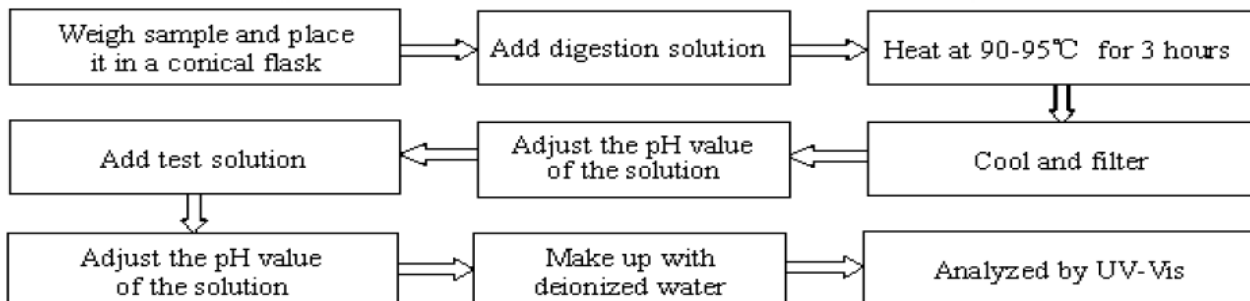
1. Lead(Pb), Cadmium(Cd)



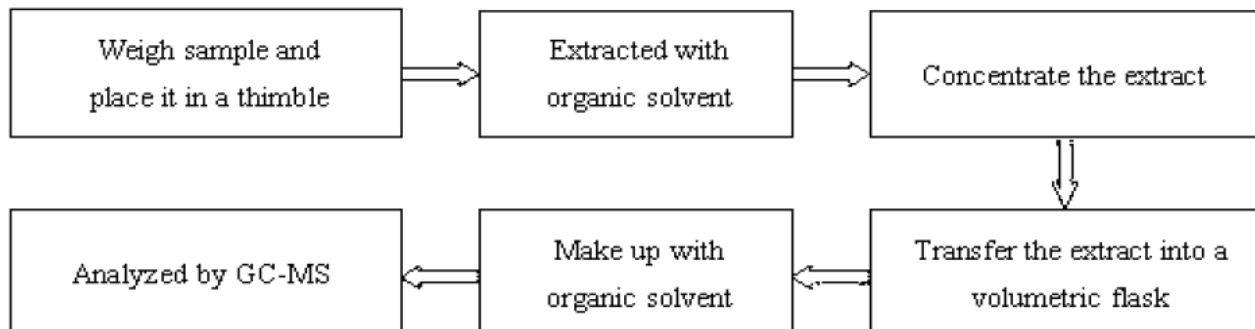
2. Mercury(Hg)



3. Hexavalent Chromium (Cr(VI))



4. Polybrominated Biphenyls (PBBs), Polybrominated Diphenyl Ethers(PBDEs)



Method Detection Limit (MDL) in wet chemical test

Test Items	Pb	Cd	Hg	PBBs & PBDEs
Unit	mg/kg	mg/kg	mg/kg	mg/kg
MDL	2	2	2	2

Result	:	Pass
Conclusion	:	The results shown on the report do reference to the limit in commission decision of 18 Aug 2005 amending Directive 2002/95/EC (RoHS) notified under document 2005/618/EC and its subsequent amendments.

Reviewed by

Mills Chen
Manager

Test Data Summary

Part No.	Part Description	Regulated Substances	Result of XRF ¹	Conclusion on ROHS
1	Input Wire	Cd	N.D	Comply
		Pb	N.D	
		Hg	N.D	
		Cr6+	N.D	
		PBBs	N.D	
		PBDEs	N.D	
2	Terminal	Cd	N.D	Comply
		Pb	N.D	
		Hg	N.D	
		Cr6+	N.D	
		PBBs	N.D	
		PBDEs	N.D	
3	Plastic Enclosure	Cd	N.D	Comply
		Pb	N.D	
		Hg	N.D	
		Cr6+	N.D	
		PBBs	N.D	
		PBDEs	N.D	
4	PCB	Cd	N.D	Comply
		Pb	N.D	
		Hg	N.D	
		Cr6+	N.D	
		PBBs	N.D	
		PBDEs	N.D	
5	Capacitor	Cd	N.D	Comply
		Pb	N.D	
		Hg	N.D	
		Cr6+	N.D	
		PBBs	N.D	
		PBDEs	N.D	
6	Resistance	Cd	N.D	Comply
		Pb	N.D	
		Hg	N.D	
		Cr6+	N.D	
		PBBs	N.D	
		PBDEs	N.D	
7	Diode	Cd	N.D	Comply
		Pb	N.D	
		Hg	N.D	
		Cr6+	N.D	
		PBBs	N.D	
		PBDEs	N.D	
8	Chip	Cd	N.D	Comply
		Pb	N.D	
		Hg	N.D	
		Cr6+	N.D	
		PBBs	N.D	
		PBDEs	N.D	

9	Insulating Tape	Cd	N.D	Comply
		Pb	N.D	
		Hg	N.D	
		Cr6+	N.D	
		PBBs	N.D	
		PBDEs	N.D	
10	Winding	Cd	N.D	Comply
		Pb	N.D	
		Hg	N.D	
		Cr6+	N.D	
		PBBs	--	
		PBDEs	--	
11	Big Capacitor	Cd	N.D	Comply
		Pb	N.D	
		Hg	N.D	
		Cr6+	N.D	
		PBBs	N.D	
		PBDEs	N.D	
12	Soldering Tin	Cd	N.D	Comply
		Pb	N.D	
		Hg	N.D	
		Cr6+	N.D	
		PBBs	--	
		PBDEs	--	
13	Transparent Cover	Cd	N.D	Comply
		Pb	N.D	
		Hg	N.D	
		Cr6+	N.D	
		PBBs	N.D	
		PBDEs	N.D	
14	Foam Cotton	Cd	N.D	Comply
		Pb	N.D	
		Hg	N.D	
		Cr6+	N.D	
		PBBs	N.D	
		PBDEs	N.D	
15	LED Granule	Cd	N.D	Comply
		Pb	N.D	
		Hg	N.D	
		Cr6+	N.D	
		PBBs	N.D	
		PBDEs	N.D	
16	Lamp Panel	Cd	N.D	Comply
		Pb	N.D	
		Hg	N.D	
		Cr6+	N.D	
		PBBs	N.D	
		PBDEs	N.D	
17	Metal Enclosure	Cd	N.D	Comply
		Pb	N.D	
		Hg	N.D	

		Cr6+	N.D	
		PBBs	--	
		PBDEs	--	
17	Bobbin	Cd	N.D	Comply
		Pb	N.D	
		Hg	N.D	
		Cr6+	N.D	
		PBBs	N.D	
		PBDEs	N.D	
18	Glue	Cd	N.D	Comply
		Pb	N.D	
		Hg	N.D	
		Cr6+	N.D	
		PBBs	N.D	
		PBDEs	N.D	
19	X Capacitor	Cd	N.D	Comply
		Pb	N.D	
		Hg	N.D	
		Cr6+	N.D	
		PBBs	N.D	
		PBDEs	N.D	
20	Y Capacitor	Cd	N.D	Comply
		Pb	N.D	
		Hg	N.D	
		Cr6+	N.D	
		PBBs	N.D	
		PBDEs	N.D	
21	Inductance	Cd	N.D	Comply
		Pb	N.D	
		Hg	N.D	
		Cr6+	N.D	
		PBBs	N.D	
		PBDEs	N.D	
22	KNP-RF	Cd	N.D	Comply
		Pb	N.D	
		Hg	N.D	
		Cr6+	N.D	
		PBBs	N.D	
		PBDEs	N.D	
23	Heat shrinkable tubing	Cd	N.D	Comply
		Pb	N.D	
		Hg	N.D	
		Cr6+	N.D	
		PBBs	N.D	
		PBDEs	N.D	
24	MOSFET	Cd	N.D	Comply
		Pb	N.D	
		Hg	N.D	
		Cr6+	N.D	
		PBBs	N.D	
		PBDEs	N.D	

25	HEAT SINK	Cd	N.D	Comply
		Pb	N.D	
		Hg	N.D	
		Cr6+	N.D	
		PBBs	--	
		PBDEs	--	
26	Screw	Cd	N.D	Comply
		Pb	N.D	
		Hg	N.D	
		Cr6+	N.D	
		PBBs	--	
		PBDEs	--	

Note:

(1) N.D. = Not detected (<MDL)

(2) ppm = mg/kg

(3) N.A. = Not Analyzed

(4) Negative = the concentration of Hexavalent Chromium extracted from 50cm² sample is less than the detection limit.

Attachment –A

Photo Documentation

<p>Photo 1</p> <p>View:</p> <p><input type="checkbox"/> front</p> <p><input type="checkbox"/> rear</p> <p><input type="checkbox"/> right side</p> <p><input type="checkbox"/> left side</p> <p><input checked="" type="checkbox"/> top</p> <p><input type="checkbox"/> bottom</p> <p><input type="checkbox"/> internal</p>	
---	---

<p>Photo 2</p> <p>View:</p> <p><input type="checkbox"/> front</p> <p><input checked="" type="checkbox"/> rear</p> <p><input type="checkbox"/> right side</p> <p><input type="checkbox"/> left side</p> <p><input type="checkbox"/> top</p> <p><input type="checkbox"/> bottom</p> <p><input type="checkbox"/> internal</p>	
---	--

Photo 3

View:

- front
- rear
- right side
- left side
- top
- bottom
- internal



Photo 4

View:

- front
- rear
- right side
- left side
- top
- bottom
- internal

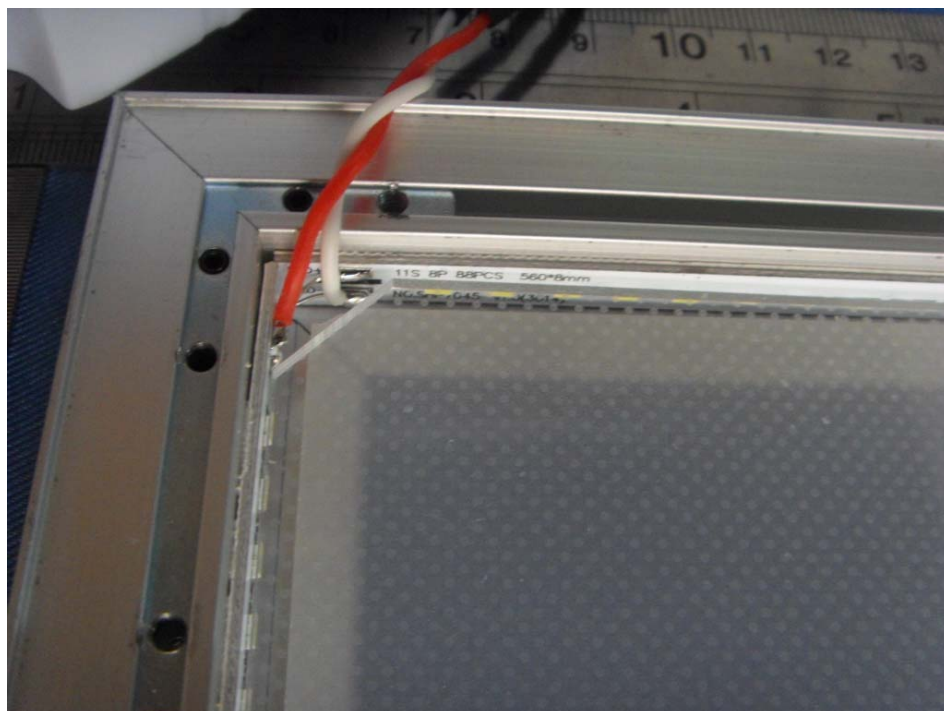


Photo 5

View:

- front
- rear
- right side
- left side
- top
- bottom
- internal

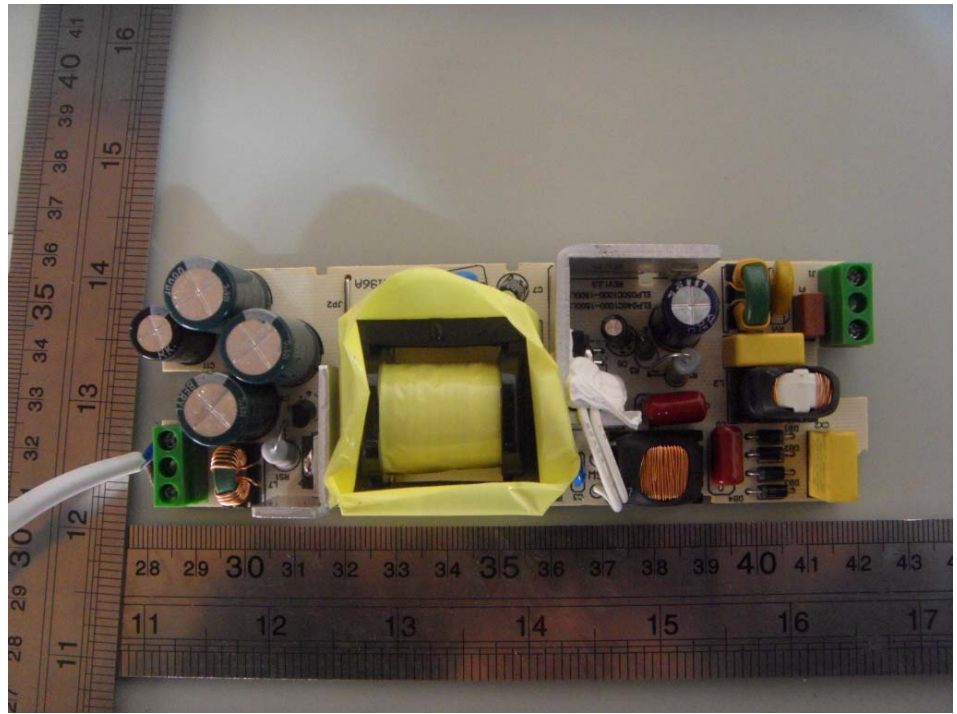
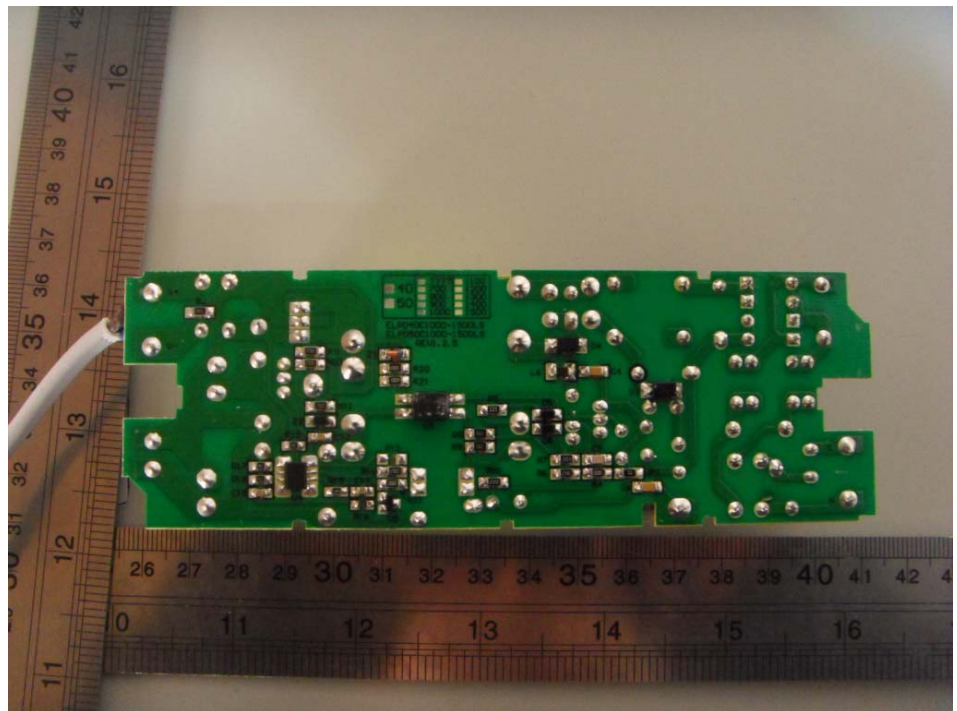


Photo 6

View:

- front
- rear
- right side
- left side
- top
- bottom
- internal



END.