

MEASUREMENT REPORT NUMBER 2015-067/16.02.2015

testing samples of products

Model number or type, referring to the manufacturer: LED PANEL LIGHT, VT-6060, SKU CODE: 6025

Company identification: V-TAC Europe Ltd., Sofia 1220, 1, Iliansko Shaussee Blvd.

Applicant testing: V-TAC Europe Ltd., Sofia 1220, 1, Iliansko Shaussee Blvd.

Type of test: control measurements

Measurements have been performed:

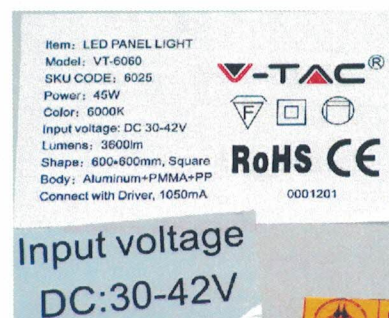
- luxmeter PU 550, ID 263621/2586, calibration certificate of the METRA BLANSKO a.s.№2887/2012, 19.12.2012;
- luxmeter KYORITSU 5202, ID K0017929, calibration certificate of the National Centre of Metrology 181-ОИ/15.12.2012;
- luminance-meter L 1003 of angular field 1°, producer "LMT" Germany, ID 0686191, calibration certificate of the National Centre of Metrology 130-ОИ/20.12.2010;
- Ulbricht photometer with diameter 2м;
- Automated goniophotometer.
- Power Meter HM8115-2 ID 015447345, calibration certificate of the National Centre of Metrology 148-ЕЕИ/14.12.2012;
- Digital thermometer with temperature sensor DS18B20 ID 0000011697CDH, calibration certificate of the National Centre of Metrology 268-ТИ/14.11.2012;
- Ampermeter Д5101 ID 737/1990, calibration certificate of 'ЛК УНИСИСТ' Ltd №733/21.11.2012;
- MEGER UT512 ID 1111074682, calibration certificate of 'ЛК УНИСИСТ' Ltd №732/21.11.2012;
- Laser rangefinder DLE-40
- spectroradiometer MK350 ID HS0313220158, test source MK002, calibration certificate of UPRtek lab № A012001 / 2013/7/5

Technical specifications of documentation:

LED PANEL LIGHT, VT-6060, SKU CODE: 6025



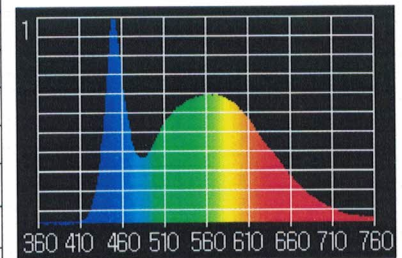
Luminaire



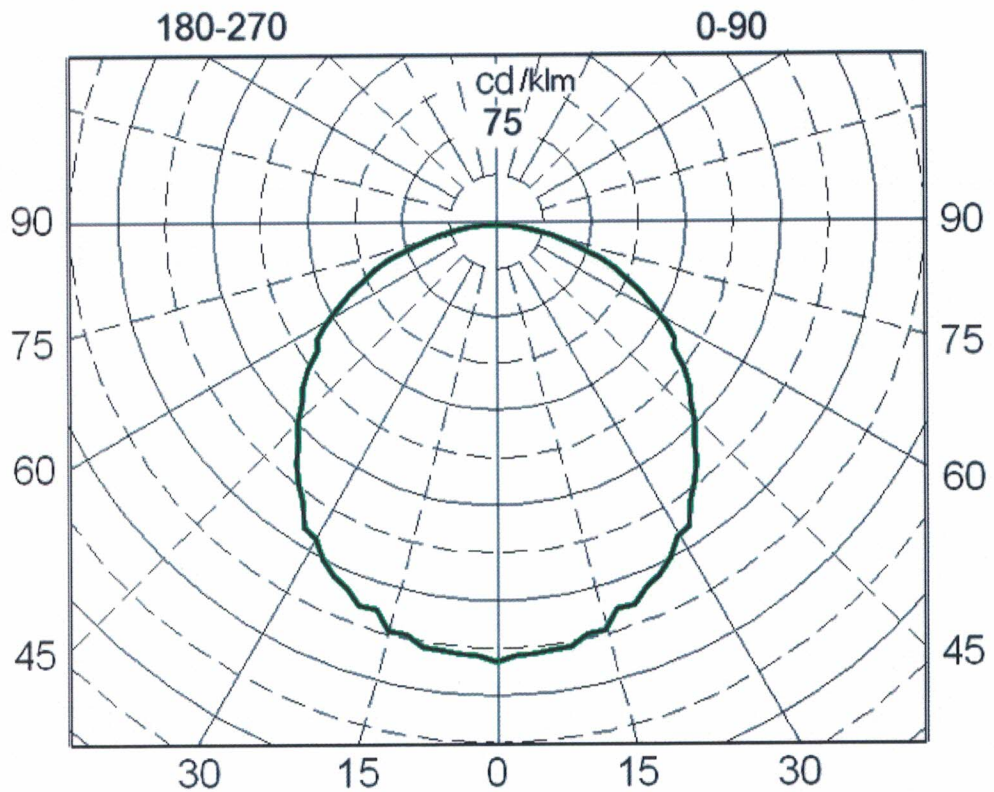
Tabele

Results of test

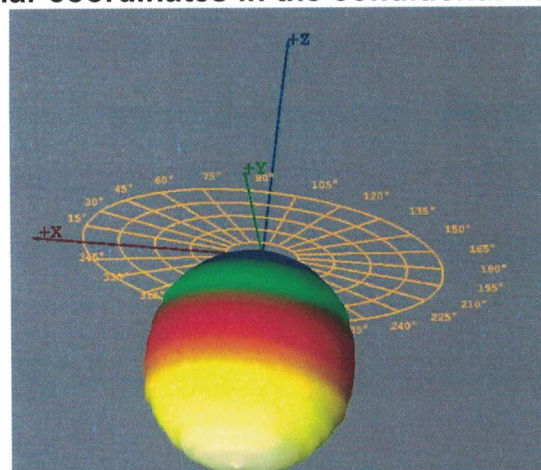
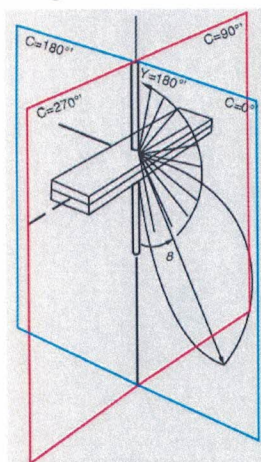
Operating voltage	DC 37.2 V
Operating Current	DC 1.045 A
Wattage including ballast (watts)	38.87 W
Power factor	-
color temperature	5813K
Color rendering index CRI	82
color coordinates CIE 1931	x=0.3254, y=0.3439
color coordinates CIE 1976	u'=0.2010, v'=0.4779
Luminous flux emitted by a luminaire	3572 lm
Light output of the luminaire	92.1 lm/W



Spectrum of light



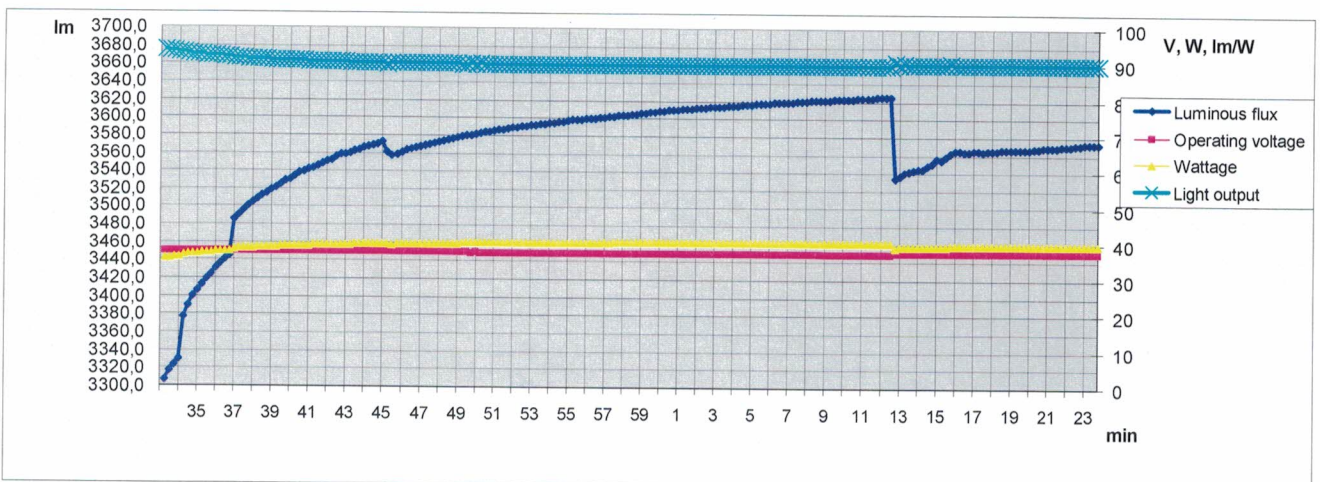
Luminaire light distribution of polar coordinates in the conditional flux 1000lm



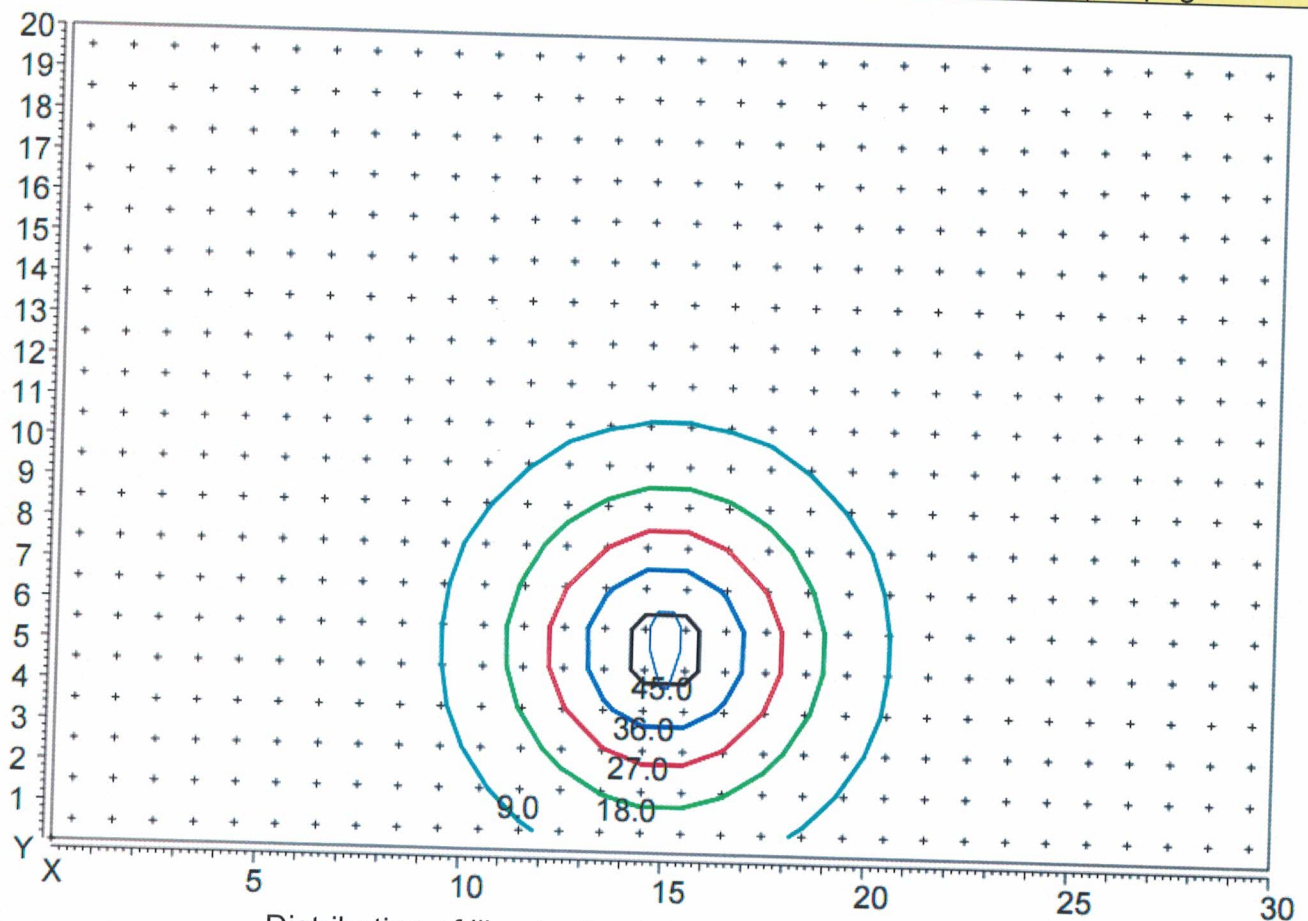
Luminaire light distribution of the 3D

Light distribution of luminaries are in tabular form for conditional luminous flux 1000lm:

gm/C	0	15	30	45	60	75	90	105	120	135	150	165	180
0.0	349	349	349	349	349	349	349	349	349	349	349	349	349
2.5	344	344	344	344	344	344	344	344	344	344	344	344	344
5.0	344	344	344	344	344	344	344	344	344	344	344	344	344
7.5	342	342	342	342	342	342	342	342	342	342	342	342	342
10.0	342	342	342	342	342	342	342	342	342	342	342	342	342
12.5	335	335	335	335	335	335	335	335	335	335	335	335	335
15.0	335	335	335	335	335	335	335	335	335	335	335	335	335
17.5	321	321	321	321	321	321	321	321	321	321	321	321	321
20.0	323	323	323	323	323	323	323	323	323	323	323	323	323
22.5	314	314	314	314	314	314	314	314	314	314	314	314	314
25.0	309	309	309	309	309	309	309	309	309	309	309	309	309
27.5	301	301	301	301	301	301	301	301	301	301	301	301	301
30.0	289	289	289	289	289	289	289	289	289	289	289	289	289
32.5	286	286	286	286	286	286	286	286	286	286	286	286	286
35.0	271	271	271	271	271	271	271	271	271	271	271	271	271
37.5	260	260	260	260	260	260	260	260	260	260	260	260	260
40.0	249	249	249	249	249	249	249	249	249	249	249	249	249
42.5	235	235	235	235	235	235	235	235	235	235	235	235	235
45.0	225	225	225	225	225	225	225	225	225	225	225	225	225
47.5	211	211	211	211	211	211	211	211	211	211	211	211	211
50.0	203	203	203	203	203	203	203	203	203	203	203	203	203
52.5	190	190	190	190	190	190	190	190	190	190	190	190	190
55.0	174	174	174	174	174	174	174	174	174	174	174	174	174
57.5	169	169	169	169	169	169	169	169	169	169	169	169	169
60.0	157	157	157	157	157	157	157	157	157	157	157	157	157
62.5	142	142	142	142	142	142	142	142	142	142	142	142	142
65.0	129	129	129	129	129	129	129	129	129	129	129	129	129
67.5	114	114	114	114	114	114	114	114	114	114	114	114	114
70.0	102	102	102	102	102	102	102	102	102	102	102	102	102
72.5	89	89	89	89	89	89	89	89	89	89	89	89	89
75.0	71	71	71	71	71	71	71	71	71	71	71	71	71
77.5	57	57	57	57	57	57	57	57	57	57	57	57	57
80.0	46	46	46	46	46	46	46	46	46	46	46	46	46
82.5	33	33	33	33	33	33	33	33	33	33	33	33	33
85.0	22	22	22	22	22	22	22	22	22	22	22	22	22
87.5	12	12	12	12	12	12	12	12	12	12	12	12	12
90.0	4	4	4	4	4	4	4	4	4	4	4	4	4
92.5	1	1	1	1	1	1	1	1	1	1	1	1	1
95.0	1	1	1	1	1	1	1	1	1	1	1	1	1



Changing the light flux



Distribution of illumination in height hanging lamp 5 m
Coordinates of the luminaire X=15m, Y=5m.

Applications:

Files with the EULUMDAT format. Light distribution is captured in γ -C planes with step 2.5° in plane γ (от 0° - 95°) и 5° in plane C (от 0° - 360°) accordance with EN 13032-1 p 4.2.3.

Files with the measured values

- 2015-067-P2.ltd - (photometric data in a standard format for two axel of symmetry C = 0° - 180° и C = 90° - 270°),

Test results relate only to test samples.

Sofia 16.02.2015

The measurements made:

/assoc. prof. d-r. Krasimir Velinov/

Manager:



/prof. d-r. L. Totev/